

# The Little Mermaid

A PUBLICATION OF THE NORTHWEST DANISH ASSOCIATION

Jan. Feb. Mar. 2019 Issue #2018/2019 Volume 3

## Julestue: A Danish Christmas Celebration in Seattle

By Line Larsen



Julestue on December 9th looked like Santa's workshop. People of all ages crowded around the craft tables set up at the Seattle Danish Center. Hands were busy cutting and folding paper into julehjerter, krammerhuse, julestjerner, and other Danish crafts. The air was filled with hints of citrus and cloves, as mandarins were decorated the traditional Danish way. Anyone who has been to Denmark around Christmas time would have been graced with nostalgia.

Julehjerter are woven hearts, a common Christmas tree decoration in Denmark. The first known woven julehjerte was made by Hans Chris-

tian Andersen, the famous Danish fairytale author (source [www.kristeligt-dagblad.dk](http://www.kristeligt-dagblad.dk)). It is only fitting that we make them at Julestue in Seattle each year. Another craft guests took on were the more challenging julestjerner, that are created by folding strips of paper into 3-dimensional stars. This year beginners were lucky enough to be led by julestjerne-expert, Rita, who has even written a book on how to master the craft. Krammerhuse were added to the craft tables this year, which are essentially cones glued together with handles. They are often filled with goodies like pebernødder, which are Danish peppernut cookies that are baked by the masses in Denmark during the month of December. (According to Nordjyske.dk it is estimated that Danes eat 1000-2000 tons of pebernødder per year!)

Julestue is not just centered on traditional arts and crafts, but also on dance, that is, 'dancing' around the Christmas tree. Following Danish tradition, this entails holding hands and singing songs (or for some, humming the songs). Nora Martinez was kind enough to lend her talent on the piano to guide the Danish and English Christmas carols from "Rudolf the Red Nosed Reindeer" to

*Continued on page 7*

## Elder Care

*From the NWDA Elder Care  
Committee in Seattle*



*Image: NWDA's Elder Care program lends support to NWDA member, Elaine Richards (middle)*

An important cornerstone of NWDA's mission is the tradition established by the early Danish immigrants of providing assistance to the elderly and people with special needs. The aim is to provide opportunity for an active, engaged and inclusive life for seniors with Danish connections by helping with services ranging from transportation to important Danish-oriented events to assistance in the home. As an example, some elderly have been supplied with 'lifelines'. These devices, which can be worn day and night, enable the elder/disabled to call for help in case of emergency without having to reach a telephone. For some, it has meant life-saving help. For all it gives a greater sense of security.

*Continued on page 8*

### In this issue

- 1....Julestue & a Note on Elder Care
- 2....President's Corner
- 3....NWDA News
- 4....Membership

- 5.....Oregon
- 6..... Denmark
- 8..... Dawn of the Viking Age
- 9..... Seattle/Portland Calendars
- 10.....Donations



*Northwest Danish Association is a non-profit organization dedicated to preserving and sharing with others our Danish culture, traditions, and values*

# President's Corner



## Northwest Danish Association Board of Directors

### Officers

Edith E. Christensen, EdD, President  
Gary Korsgaard, Vice-President  
Sonja Kromann, Secretary  
Kenneth Kromann, Treasurer

### Board of Directors

Karla Craig  
Nils Jensen  
Erik Laursen  
Britt Pfaff-Dunton  
Erik Pfaff  
Bo Schultz-Andersen  
Lois Toftemark  
Claus Windelev

## Northwest Danish Association Contact Information

### General Inquiries

E-mail: [seattle@nwdanish.org](mailto:seattle@nwdanish.org)  
Phone: (206) 523-3263

Visit our website for more information about events and programs! Via our website you can also sign up for our e-bulletin to receive updates on all these activities.

**[www.northwestdanish.org](http://www.northwestdanish.org)**

**Remember, you can now  
follow NWDA on  
LinkedIn, Instagram,  
Facebook, and Twitter!**



## Upcoming Programs and Events

*By Dr. Edith E. Christensen*

Happy New Year. The ScanFair in Portland was a great success. Many, many aebdiskiver were eaten, lovingly prepared by our Himmelbjerget volunteers. This fantastic fund raiser is provided every year for raising money to support the Himmelbjerget Danish Camp. Planning is underway for a great program highlighting castles of Denmark. Plan now to reserve a place for your 10 to 18 year olds June 23 to 29 at Menucha Retreat Center in Corbett, Oregon. Get information from the Northwest Danish Association website, [nwdanishassociation.org](http://nwdanishassociation.org)

Other activities coming up for you to plan on attending are the annual Danish American Cultural Retreat also held at Menucha in Oregon. The dates for this event are June 21 to 23. Some speakers are already engaged for this popular retreat. Mark your calendar and watch the Wednesday e-bulletins for further information.

There will be The Little Viking Dane Camp for 5 to 10 year old's in Seattle and also the equivalent camp for Portland 4 to 7 year old's. These will be announced in the weekly e-bulletin sent out by Northwest Danish Association. Be sure to sign up early for these camps for children as they fill up fast. Dates for these two

camps will be announced when they are settled.

Coming up this spring are some events you won't want to miss. There is the Nytårsfrokost to be held January 27 in Seattle at Harmony Hall. Limited reservations are a must for this early afternoon smørrebrød and kransekage with drinks included.

Jorn Mathiasen, chef, will be doing a Cook and Eat dinner meal on February 7. Come and learn about preparing an authentic Danish meal and enjoy eating it. Reservations will be limited so reserve early for this special meal.

Early this month there was a Bingo Scholarship fund raiser sponsored by The Dane Café in Ballard. Everyone there participated so we could raise some money to support scholarships for students to attend college. Our annual Auction used to support it but since we no longer do an auction, other methods of raising scholarship funds have been created. We also happily accept your donation specifically restricted to scholarships. Be sure to send your donations and specify it is for scholarships. These are awarded this spring for students attending college in the fall. Help our young with this important step in their lives. Thanks.

# NWDA News



## New Event in 2019: Nytårsfrokost

In the last issue of The Little Mermaid you may have noticed us mention a julefrokost. We have had to push this event idea to this new year, so instead you are invited to join us for a Nytårsfrokost- a Danish New Year's lunch. Think julefrokost, but in January! The event will be held at the Seattle Danish Center on **Sunday, January 27th at 2:00 pm.**

### Menu:

Danish open-faced sandwiches

Champagne, beer, wine, aquavit, coffee/tea

11-ring kransekage donated by Byen Bakeri for dessert!



*Image from winelab.dk*

### Reservations are open!

Register online here:

[www.northwestdanish.org/nytarsfrokost/](http://www.northwestdanish.org/nytarsfrokost/)

Or call us: (206) 523-3263



Thank you to Byen Bakeri for donating to this event!

## 2019 Summer Programs: Save the Date

### Danish American Cultural Retreat: June 21 to 23, 2019

*Come learn and relax in a region immersed in breathtaking nature, panoramic views, and waterfalls. The program is focused on Denmark and Danish culture.*



### Himmelbjerget Danish Camp: June 23 to 29, 2019

*A week-long camp for kids and teens ages 10-18. This year the theme is Danish castles!*

*Both programs are held at the Menucha Retreat and Conference Center in Corbett, Oregon each year*

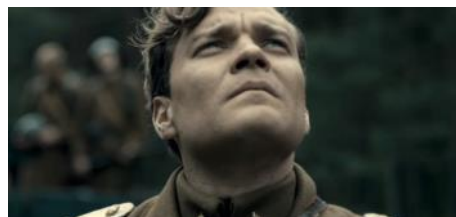


## Nordic Ventures : A Spring Series

*Save the dates below!*

Our annual Spring series, Nordic Ventures, will run in April and May this year. The series showcases topics from the Northern Hemisphere with a focus on Denmark.

### 2019 Program so far:



April 9th: Film - *April 9th*

May 5th: Film - *Hvidstengruppen*

May 23rd: Book Talk - *48 RPM* by Flemming Behrend

*Program subject to change. Watch the NWDA e-bulletin for any changes.*

# NWDA Membership Form



Name:		Spouse/Partner:	
Current Address:			
City:	State:	Zip:	Phone:
Email(s) (required):			
<input type="checkbox"/> Check here if you do NOT want to receive e-bulletins with updates on events, programs, and activities			

## Annual Membership Categories (check one)

- ☐ **Adult Individual - \$50**  
☐ **Couple or Family - \$75**  
*(up to 2 adults and minor children living in one household)*  
☐ **Senior Individual (65+) - \$35**  
☐ **Senior Couple (both 65+) - \$60**  
☐ **Student Individual - \$35** *(enclose copy of student ID)*

For organization/business memberships please see our website or contact us

### Family membership: Dependent children (18 & under) if membership privileges desired

Name/ Age:	Name/ Age:
Name/ Age:	Name/ Age:

### Membership Information:

Membership year is July 1 to June 30.

Dues renewal date is **JULY 1** each year.

For more information on membership and benefits,  
visit: [www.northwestdanish.org/membership/](http://www.northwestdanish.org/membership/)

## Add a tax-deductible donation (Check boxes that apply)

- ☐ **Royal Dane - \$50**  
☐ **Noble Dane - \$100**  
☐ **Bold Dane - \$250**  
☐ **Great Dane - \$500**  
☐ **Grand Dane - \$1000**  
☐ **Other - \$ \_\_\_\_\_**  
☐ I would like to make a **recurring donation (minimum \$10)** of \_\_\_\_ per month.  
☐ My employer will match my contribution to NWDA.  
 Enclosed is my matching gift form.

Would you like to donate your time?  
Check here:

☐ **Yes, I'm interested in volunteering!**

**NWDA is a 501 (c)(3) non-profit organization,  
TAX-ID 91-0565541.**

## Totals

Membership Dues	\$
Donation	\$
+\$15 The Little Mermaid (for printed copies please enclose \$15 to cover postage & handling)	\$
<b>TOTAL</b>	<b>\$</b>

## Payment Information

☐ **Check enclosed payable to:**  
Northwest Danish Association

☐ **I am paying by Debit/Credit Card:**  
Name on card (please print): \_\_\_\_\_

Card # \_\_\_\_\_ Exp. Date: \_\_\_\_\_

Signature: \_\_\_\_\_

Date Signed: \_\_\_\_\_

### RETURN COMPLETED FORM WITH PAYMENT TO:

Northwest Danish Association  
1833 N 105<sup>th</sup> Street, Suite 101  
Seattle, WA 98133



# Oregon



## Julefest 2018

*By Charlene Jensen*



The NWDA members of Portland/SW Washington paired with the Danish Sisterhood Mt. Hood Lodge #81 to make Julefest 2018 a special event, especially for the children who attended. There were approximately 60 people at the Julefest that was held at Bethany Lutheran Church on December 8, 2018. People young and old alike shared in the fun: crafting; writing letters to Julemanden; singing and dancing around the Juletræ; and decorating cookies. The children were especially excited when the Julemand made his entrance!

## Goodie Bags by the Book Club

*By Charlene Jensen*

Thank you so much to the busy elves who filled the goodie bags for the Julefest sponsored by the Danish Sisterhood. As it has been year after year, so it was this year as well: The NWDA's Danish Book Club members from Portland/SW Washington faithfully ensured that the children at this year's Julefest had goodie bags filled with delicious treats to take home with them. The

Danish Sisterhood sends many thanks to The Danish Book Club for their help in making the Julefest 2018 a success! See Photo courtesy of Aase Besson.



SPECIAL THANKS TO EACH OF THE DANISH BOOK CLUB MEMBERS WHO HELPED MAKE GOODIE BAGS FOR JULEFEST:

Aase Besson, Anita Nelson, Jette Steuch, John Martinson, Aase Beau-  
lieu, Lise Williams, Aage Nielsen, Lene Leslie, Inger Olsen, Inge Miller  
Bodil Muller

## Gløgg Party

*By Bodil Muller*



What a wonderful party!!!! The food was spectacular, very Danish and very delicious! The gløgg was perfect, and the atmosphere was

happy and relaxed; everyone had a great time visiting with old and new friends.

Kaja Voldbæk and Hanne Wagner had done most of the work; as usual they did a fabulous job, and they know just what is typical Danish. All the good food and drink put the participants in a generous mood; the 45 attendees donated over \$1,000, enough to buy a large screen, high quality television set with a sound bar so that the Oregon NWDA members can enjoy Danish movies.

A big thanks to Kaja and Hanne!

## Oregon/SW Washington DAVS New Year's Luncheon

*By Bodil Muller*



*Photo by Ingrid Thomas*

The beautiful Nordia House Scandinavian center was filled with Danes on Sunday, January 6th. The DAVS (Danish-American Vintage Society) celebrated the new year with a spectacular Danish luncheon, following the tradition, which is more than 20 years old!

*Continued on page 11*

# Denmark



## Delivering Mail near Grundtvig's Grave

By Jan Bruun-Petersen



Image: Postman Jan at Gammel Køgegård with sign showing the way to Clara's Cemetery where Grundtvig is buried.

N.F.S. (Nikolaj Frederik Severin) Grundtvig could be compared to Benjamin Franklin or Leonardo da Vinci as being individuals or polymaths that have influenced history by focusing on various fields of expertise in one lifetime. Grundtvig (born in 1783) was a bishop, author, poet, teacher, politician, philosopher and historian. He believed that compulsion in education was not good for the soul. Instead there should be a natural curiosity and desire to learn. This also included his opposition to tests or exams.

He noticed that the poor, uneducated peasants needed to have an easy way to learn and to become active members of a democratic society. Thus, the folk high school was born. I have been enrolled in four folk high schools. Each folk high school and/or course has a field of focus. The courses can be just a couple weeks long or last a whole year. There is quite a variety of subjects for all ages of people. It is common for some

young people to take a year-long folk high school instead of going to tenth grade (Danish elementary school normally ends in ninth grade). Despite each folk high school having a particular focus, there are some things they share: singing out of the folk high school song book, having guest speakers often on unrelated topics, visiting nearby sights by charter bus, sleeping and eating together throughout the course under the same roof and no grades.

Grundtvig believed that only the church should teach about religion and not schools. However, today in the Danish elementary schools, religion is one of the subjects. Most European countries have a state church. However, there is freedom of religion in Denmark. So in school classes on religion have to discuss all religions. However, because Christianity has had the largest impact on Danish culture, the classes are heavily focused on Christianity.

Grundtvig died in 1872. His funeral was in Copenhagen, but his coffin was placed in a crypt in Køge in a cemetery that belonged to the family that he had married into. The cemetery is named Clara's Cemetery after a member of the family that died too young. The family owned Gammel Køgegård which is where the cemetery is.

Among the family members buried at the cemetery are Grundtvig's second and third wives. You can only pay your respects to Grundtvig (by going into the crypt and standing next to Grundtvig's coffin) two times a year: one day in May and one day

## Winter Hygge

By Mery Beaumont



Image: Print by Mery Beaumont

My hometown is Buenos Aires in Argentina. Back there comments are not as much on the seasons but rather on the weather, if the weather is unusually extreme. People will only comment on heat waves in the summer and "colder" days in winter, but no more than that. I lived in Denmark for 5 years, before moving to the Pacific Northwest. I find that here, just like in Denmark, winter is for many quite a slow and dark season.

For me, with my South American roots, winter in Denmark was a revelation. Of course, it was indeed a shock to find that days turned into nights so early, and that the rainy weather would hardly give us a break. However, the focus of the season was not to be wasted on those issues. In fact, the chilly weather was the perfect excuse to get cozy.

Continued on page 7

Continued on page 11



# Continued



## Julestue

By Line Larsen

*Continued from page 1*

“Højt fra Træets Grønne Top”. With over 85 people at the event from different walks of life, a combination of Danish and English is embraced at this event.

As the grand finale to the dancing, and a prelude to Santa’s arrival, the last song was “Here Comes Santa Claus”. Children jumped up and down as they heard the bells from down the hall. They politely lined up around the Christmas tree to wait their turn to sit on Santa’s lap. Some kids were brave and sat on Santa’s lap; some even whispered into his ear. Others felt a safe distance of few feet was sufficient, despite their curiosity about the bearded man. The goody bags Santa offered weren’t quite enough to entice them. Their fear may have subsided had



*Image: Bonding with Julemanden was a little scary, but Søren conquered his fear*

they known Santa was only the friendly Thomas Buus in disguise.

All the activities and excitement were bound to drum up an appetite. Hot dogs and kringle were ready post-Santa time. And to the delight of the adults in the room, the smells of warm gløgg with raisins and almonds wafted into the room from the kitchen.

The original idea behind Julestue was to create an event for kids, but the last few years adults have outnumbered them. Christmas time in Denmark is a special time with a specific kind of hygge, Julehygge. Danish Christmas traditions bring back warm memories for children as well as adults.

Julestue epitomizes the beauty that lies in having Danish cultural events in the Pacific Northwest. Danish cultural organizations outside of Denmark ensure continued access to Danish culture across the world, providing a space to share common traditions. Events are also an opportunity to



*Image: Marianne and Anton working to master the art of folding strips of paper into Danish Christmas stars*

teach others about the different cultures that exist around the world, including a culture from a small country like Denmark.

Julestue is sponsored by the Danish Sisterhood, the Danish Brotherhood, and Northwest Danish Association. These organizations continue to create opportunities like Julestue, for locals to connect with Danish culture and language from across the globe.

## Delivering Mail near Grundtvig’s Grave

By Jan Bruun-Petersen

*Continued from page 6*

in September. This can be done through purchasing a ticket from the Køge Museum.

I bicycled past the cemetery while delivering mail by bike. I am currently working for Postnord which was previously called Post Danmark. Post Danmark had employees with red uniforms but at Postnord the uniforms are blue. Denmark had combined with Sweden to form Postnord as old-fashioned letters were almost not being sent anymore in the digital age. The Danish postal system was losing money, but the Swedish one was not. However, Sweden appreciated that the Danes had developed some technical solutions in the Danish postal system that the Swedes could benefit from. Most of the letters and small packages are delivered by electric bike that with pedaling can reach speeds of 20 kilometers an hour. Though owned only by the two countries, Postnord also operates in other Nordic countries and Germany.

# The Dawn of the Viking Age



## The Vanir Gods

*Viking Series: Part 16*

Summarized based on Hudson Publications Event Bookazines 2013, "Vikings: Their Myths and Legends." For Part 15 of this article, see Issue #2018-2019 Volume 2 of The Little Mermaid

### Njord

Njord is a Vanir god that lives in No-atun, an area of the heavens. He controls winds, the strength of fires and of the sea. Therefore, he is the god that is called upon by sea-farers and fishermen. As a rich god he is able to give gifts to those who ask him. Njord is the father of Frey and Freya.

### Frey

Frey is also a Vanir god. Like Njord, Frey and Freya, his sister, came to Asgard as hostages. Frey is one of the most celebrated gods because he rules over rain and sunshine, as well as all the fruits of the earth. He is called upon for profitable harvests and even for peace on earth.

### Freya

Freya is the goddess of fertility. Love is her language. She married Od, a god who abandoned her, after which she grieved for the rest of her life.



*Image: Heimdall, the gold-toothed god*



*Image: Freya, the goddess of fertility*

### Heimdall

No one is sure if Heimdall is a Vanir god or an Aesir god. The Wave Maidens were his mothers. It would take nine maidens to make one child between them. His father was most likely Odin.

Heimdall was also known as the Gold Toothed god because he was known for his beauty, brightness, intelligence, and goodness. He is the god that guards Bifrost, the rainbow bridge, in order to keep giants from attacking Asgard. In order to aid him in this job the other gods gave him sharp senses. They say he could hear the wool growing on a sheep's back. He also hardly ever had to sleep. Along with protecting Asgard, he was also the god who welcomed heroes as they entered Valhalla.

Heimdall was the father to three lines of humans: Thrall, Karl, and Jarl. As the story goes, Heimdall's grandson, Konur, was thought to be the first king of Denmark. Legend also has it that Heimdall is the one that would kill Loke during Ragnarok. He himself too would be killed in the process.

## Elder Care

*From the NWDA Elder Care Committee in Seattle*

*Continued from page 1*

Further information regarding various services available in the metropolitan Seattle area is available at NWDA. Those who may be in need of any of the services offered or know of someone who needs assistance are encouraged to call 206-523 DANE (3263). An "Application for Assistance" form is kept on file.

Also, volunteers are needed to make telephone calls, visit those in need, provide rides to events, and/or other assistance. Please call the office for further details.

## Donate your time- Volunteer with us!



**Writing/Editing**—Assist with The Little Mermaid, including writing articles of interest to the Danish community

**Event Help** - Assist with activities and programs as needed. Duties may include event set-up, staffing, and clean-up.

Please contact us!  
We would love your help!  
Call 206-523-3263  
or e-mail [seattle@nwdanish.org](mailto:seattle@nwdanish.org)



# NW Danish Calendar



## Januar 2019

Søndag	Mandag	Tirsdag	Onsdag	Torsdag	Fredag	Lørdag
		1 Godt Nytår!	2 DBIA/DSS (S)	3	4	5
6 New Year's Luncheon (P)	7	8 Work Party (S)	9	10	11 Bingo Fundraiser at The Dane (S)	12
13	14	15	16	17 Torsdagsklubben (S)	18	19
20	21	22	23	24	25	26
27 Nytårsfrokost (S)	28	29	30	31		

## Februar 2019

Søndag	Mandag	Tirsdag	Onsdag	Torsdag	Fredag	Lørdag
					1 Fredagscafe (S)	2
3	4	5 Work Party (S)	6 DBIA/DSS (S)	7 Cook & Eat with Jorn (S)	8	9
10	11	12	13	14	15	16
17	18	19	20 Bogklub (P)	21 Torsdagsklubben (S)	22	23
24	25	26	27	28		

## Marts 2019

Søndag	Mandag	Tirsdag	Onsdag	Torsdag	Fredag	Lørdag
					1 Fredagscafe (S)	2 Fastelavn (P)
3 Fastelavn (S)	4	5 Work Party (S)	6 DBIA/DSS (S)	7	8	9
10	11	12	13	14	15	16
17	18	19	20	21 Torsdagsklubben (S)	22	23
24	25	26	27	28	29	30
31						

(P)= Portland (S) = Seattle

For more information on these events, programs, and activities, please visit our website: [www.northwestdanish.org](http://www.northwestdanish.org)  
Events are subject to change. Join our e-bulletin via our website for notification of any changes.

You can also find us on **Facebook**, **LinkedIn**, **Twitter**, and **Instagram**!



# Donations: Thank you!



## Donations: July to December 2018

### Grand Dane (\$1000 and up)

Benevity Community Impact  
East Side Circle  
Ib Rossen

### Great Dane (\$500-\$999)

Vagn Noeddelund  
YourCause Trustee

### Bold Dane (\$250-\$499)

Birte and Jim Falconer  
Anders Nielsen & George Zeno

### Noble Dane (\$100-\$249)

Joan & Denny Cavin  
Teeda Gengo  
Hellan Goodhope  
Ellen Juhl  
Judith Kiteley  
Kim Kreidler & Helsa Petersen  
Inga Kromann  
Kenneth Kromann  
Greta Larsen  
Hans Henrik & Dorthe Olsen  
Elaine & Shelia Richards  
Anker Sorensen  
Karna Town  
Hans E. Rasmussen

### Royal Dane (\$50-\$99)

Joan Kay & Ido Avnery  
Travis Christensen  
Diane Chapman  
Jytte Doles  
Anna Lou Falck  
Gene & Ruth Jensen  
Nathan Kalet  
Annette Kyle  
Frank & Katja Kromann  
Sonja Kromann

Audrey Haugaard-Larson  
Philip & Julie Lund  
Poul & Benedikte Olesen  
Nadine Paulsen  
Dean Pedersen  
Britt Pfaff-Dunton  
Lynn Rasmussen  
Beatrice Reiss

### Danes (up to \$49)

Robert Rudine and Janet Yoder  
Phillip & Rachael Levine  
Joseph Madsen  
Thomas Quigley Malcolm  
John Martinson Jr.  
Marvin & Sandra Nelson

### *In Honor of Linda and Ernst Jensen's 50th Wedding Anniversary*

Helga Markussen

### *In Honor of Otto Brask*

Riley Paine

### *In Memory of Terry Kalet*

Tom Holland

### Restricted Contributions: **Himmelbjerget Danish Camp**

Danish Sisterhood #75  
East Side Circle  
Ernst and Linda Jensen  
ScanFair

### **Dane Camp**

East Side Circle

### **Eldercare**

Benevity Community Impact  
Catherine Askilrud  
Dannevirke  
Ernst & Linda Jensen

### **Julestue**

Danish Brotherhood #29

### **Kitchen Appliances**

Jette Bunch  
Danish Brotherhood #29  
Dannevirke  
Danes Soccer Club  
East Side Circle  
Annemarie Lorenzen  
Georg & Nina Pedersen  
Wayne Small and Ane Ipsen

### **95th Anniversary Celebration**

Edith Christensen  
Janet Krall  
Justin Blair & Annelise Kromann  
Line Larsen  
Britt Pfaff-Dunton  
Gloria Steberl

### **Scholarship Fund**

Britt Pfaff-Dunton  
Dannevirke

## Obituary

### **Esther M. Swanson**

Ester Swanson, a longtime member of the Danish Sisterhood, passed away on November 16<sup>th</sup> at the age of 95. She grew up on a farm in Denmark with her five brothers and sisters. Esther studied nursing in Denmark and came to the U.S. as an exchange student. She met her husband Arthur while working at Swedish Hospital in Seattle. Esther is preceded in death by her husband Arthur Swanson and survived by her children; John Swanson and Susan Swanson.

The memorial service was on December 1st at Lake Burien Presbyterian Church.

# More



## DAVS Luncheon

By Bodil Muller

*Continued from page 5*

The eight tables were beautifully decorated by Ingrid Thomas and Lili Gregerson, and all the smørrebrød was delicious and colorful - and looked typically Danish. Each couple brought ten slices of smørrebrød, all the same kind, most of it decorated as nicely as you would find at a Danish café. There was plenty of seafood, meats, leverpostej, and cheese, so no one had trouble finding their favorites.



*Photo by Ingrid Thomas*

Nils Jensen was in charge of the Carlsberg and aquavit, which was also appreciated, and everyone enjoyed the festive atmosphere. Kim Bergenser had brought song sheets and was the leader of jolly Danish songs; some of us even danced the old dances that we know from our childhood. The party continued with coffee and Danish pastry, and it was not easy getting the happy Danes to leave.

A big thank you to Bo Schultz-Andersen for organizing the event, to Alf Gregerson for taking care of the finances, and to everyone who helped make this luncheon a big success.

## Winter Hygge

By Mery Beaumont

*Continued from page 6*

To start with, candles and decorating lights were spread all over, inside and around houses, in the downtown squares and narrow streets. We saw the famous lights in the shape of hearts hanging across the longest pedestrian street in Copenhagen, *Strøget*. This was a reminder that the season of caring, giving and sharing with our hearts had landed. But winter in Denmark was much more than Christmas lights, Christmas markets and gløgg. Winter is just the perfect opportunity every year to exercise "hygge" with close friends and family, even after the holiday season.

Comfy reading and a hot cocoa. Warm cushions, board games and your favorite wine. Friends having drinks in the kitchen, while sharing cooking tasks with the hosts and learning the recipe. Talking about how we did the exact same thing the year before, so now this cozy gathering has become a family tradition. What do all these moments have in common? Intimacy, relaxation, good conversations and delicious food.

This is the art of spending meaningful time with your loved ones. This is hygge. It is the way the Danes create their memories, while enjoying the journey. I believe this art of hanging out together by a candlelight is a very inspiring practice and we should keep it up it all year round!

*About the author:*

*Mery is currently based in Kirkland,*

*WA. She is a printmaker, using hand carved stamps to create unique designs, handmade prints and cards. You can visit her studio website at [www.mystampedworld.com](http://www.mystampedworld.com) to find inspiration and insights on her work, or contact her directly at [mery@mystampedworld.com](mailto:mery@mystampedworld.com) with your comments, questions or commissions.*



## NORTHWEST DANISH NETWORK

*Featured opportunities in our network. For more posts visit [www.northwestdanish.org/network/](http://www.northwestdanish.org/network/)*



### Teach Danish in Seattle

NWDA is looking for someone to teach Danish for an important youth language program for our Danish community in Seattle. This is a paid position teaching Danish language (and culture) to children and adolescents from 4<sup>th</sup> to 12<sup>th</sup> grade on Saturdays for 1.5 to 2 hours. Contact NWDA at [seattle@nwdanish.org](mailto:seattle@nwdanish.org)

*Would you like to add an opportunity to the network?*

*Contact us:*

*E-mail [Line@nwdanish.org](mailto:Line@nwdanish.org) or call (206) 523-3263*



# Northwest Danish Association



## Seattle Office

1833 N. 105th Street, Suite 101  
Seattle, WA 98133  
p) 206.523.3263  
f) 206.729.6997  
e) seattle@nwdanish.org

www.northwestdanish.org  
www.nwdanishcamp.com

## Portland Meeting Space in Bethany Lutheran Church

4330 NE 37th Ave  
Portland, OR 97211

Portland Contact: Bodil Muller  
p) 503.547.0161

Please note label problems and make corrections next to the label. Mail to the Northwest Danish Association in Seattle.

- ☐ My name is misspelled.
- ☐ My address is incorrect.
- ☐ I received more than one copy.
- ☐ I do not wish to receive Association mailings.

## Monthly Events

- Work Party — First Tuesday, Seattle (except July & August)
- DBIA & DSS — First Wednesday, Seattle (except July & August)
- Fredagscafe — First Friday, Seattle (except January & July)
- Torsdagsklubben — Third Thursday, Seattle (except July & August)

**Watch our e-bulletins each week for specific times and dates of programs.** Note: Monthly events are subject to change. Some programs do not run in the summer.

## Save the Date

### WASHINGTON

January 8: Work Party  
January 11: Scholarship Fundraiser  
January 17: Torsdagsklubben  
January 27: Nytårsfrokost  
February 1: Fredagscafe  
February 5: Work Party  
February 7: Cook & Eat with Jorn  
February 21: Torsdagsklubben  
March 1: Fredagscafe  
March 3: Fastelavn  
March 5: Work Party  
March 21: Torsdagsklubben

### OREGON

February 20: Dansk Bogklub  
March 2: Fastelavn

# The Little Mermaid



Northwest Danish Association  
1833 North 105th Street, Suite 101  
Seattle, Washington 98133-8973  
www.northwestdanish.org  
seattle@nwdanish.org

**ADDRESS SERVICE REQUESTED**

**TIME DATED MATERIAL — PLEASE DO NOT DELAY**

